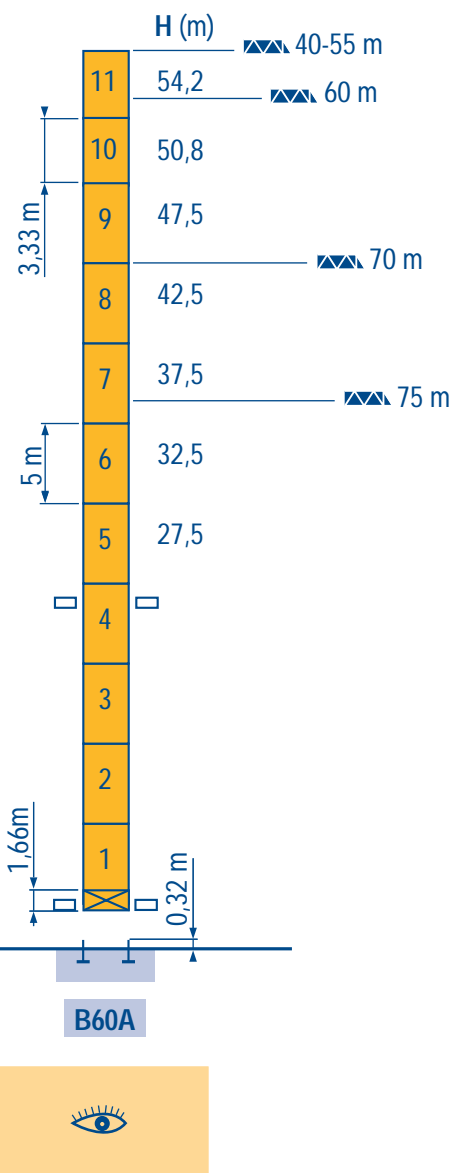
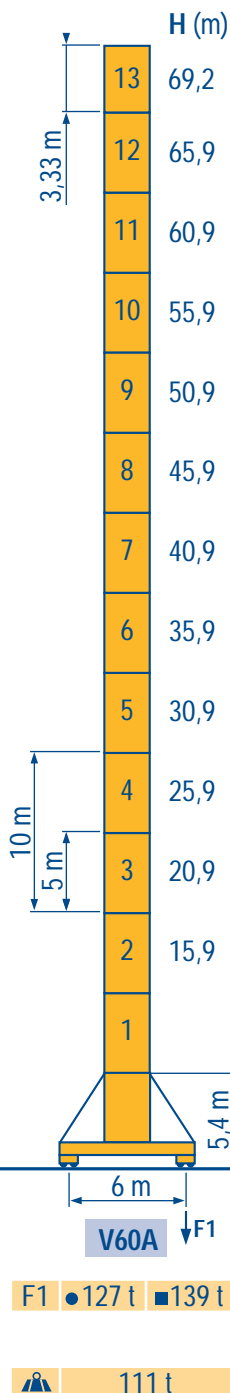
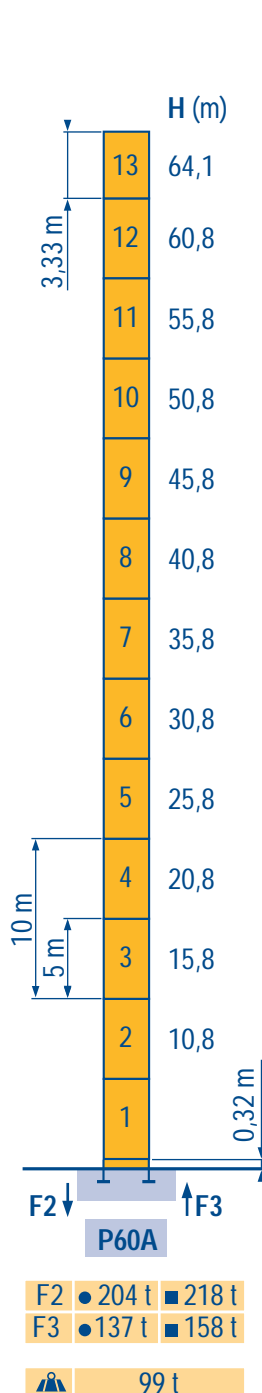




2 m
MD 345 L16

40 m → 75 m



LOB 1

Voir télescopage sur dalles
 Réactions en service
 Réactions hors service
 A vide sans lest avec flèche et hauteur maximum.

See climbing crane
 Reactions in service
 Reactions out of service
 Without load and ballast with longest jib and maximum height.

Consultare gru in cavedio
 Reazioni in servizio
 Reazioni fuori servizio
 A vuoto senza zavorra e con braccio massimo e altezza massima.

Siehe Kletterkrane im Gebäude
 Reaktionskräfte in Betrieb
 Reaktionskräfte außer Betrieb
 Ohne Last und Ballast mit Maximalausleger und Maximalhöhe.

Vea grua trepadora
 Reacciones en servicio
 Reacciones fuera de servicio
 Sin carga, sin lastre con flecha y altura máxima.

见楼板顶升
 工作状态下的反应
 非工作状态下的反应
 空载, 无配重, 起重臂和高度均为最大值

Courbes de charges
Lastkurven

F
D

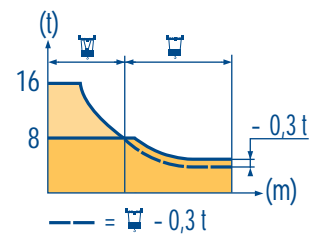
Load diagrams
Curvas de cargas

GB
E

Curve di carico
负荷曲线

I
C

75 m	2,7	17,9	20	22	25	27	30	31,3	32,2	33,5	35	37	40	42	45	47	50	52	55	57	60	62	65	67	70	72	75 m
	16	14	12,5	10,7	9,7	8,5	8	8	-	7,2	6,7	6	5,6	5,1	4,8	4,4	4,2	3,8	3,6	3,4	3,2	3	2,8	2,6	2,5	2,3 t	
								8	7,6	7,1	6,4	6	5,5	5,2	4,8	4,6	4,2	4	3,8	3,6	3,4	3,2	3	2,9	2,7 t		
70 m	2,7	19,1	20	22	25	27	30	32	33,7	34,6	36,1	37	40	42	45	47	50	52	55	57	60	62	65	67	70 m		
	16	15,2	13,5	11,6	10,6	9,3	8,5	8	8	-	7,4	6,7	6,2	5,7	5,4	4,9	4,7	4,3	4,1	3,8	3,6	3,4	3,2	3		3 t	
									8	7,8	7,1	6,6	6,1	5,8	5,3	5,1	4,7	4,5	4,2	4	3,8	3,6	3,4			3,4 t	
65 m	2,7	19,3	20	22	25	27	30	32	34,2	35,1	36,6	37	40	42	45	47	50	52	55	57	60	62	65 m				
	16	15,4	13,7	11,8	10,7	9,4	8,7	8	8	-	7,5	6,8	6,4	5,8	5,5	5,1	4,8	4,5	4,2	3,9	3,8	3,5 t					
									8	7,9	7,2	6,8	6,2	5,9	5,5	5,2	4,9	4,6	4,3	4,2	3,9 t						
60 m	2,7	19,6	20	22	25	27	30	32	34,9	35,9	37	37,4	40	42	45	47	50	52	55	57	60 m						
	16	15,7	14	12	11	9,7	8,9	8	8	7,7	-	7	6,6	6	5,7	5,3	5	4,6	4,4	4,1 t							
									8	7,4	7	6,4	6,1	5,7	5,4	5	4,8	4,5 t									
55 m	2,7	20,2	22	25	27	30	32	35	35,9	37	38,5	40	42	45	47	50	52	55 m									
	16	14,5	12,4	11,3	10	9,2	8,2	8	8	-	7,2	6,8	6,2	5,9	5,4	5,2	4,8 t										
									8	7,6	7,2	6,6	6,3	5,8	5,6	5,2 t											
50 m	2,7	20,6	22	25	27	30	32	35	36,6	37,6	39,3	40	42	45	47	50 m											
	16	14,8	12,7	11,6	10,2	9,5	8,5	8	8	-	7,4	7	6,4	6,1	5,6 t												
									8	7,8	7,4	6,8	6,5	6 t													
45 m	2,7	21,4	22	25	27	30	32	35	37	38,1	39,2	40,9	42	45 m													
	16	15,5	13,4	12,2	10,7	9,9	8,9	8,3	8	8	-	7,4	6,75 t														
									8	7,8	7,15 t																
40 m	2,7	22,6	25	27	30	32	35	37	38	40 m																	
	16	14,3	13	11,5	10,7	9,6	8,9	8,6	8,1 t																		



Ancrages
Verankerungen

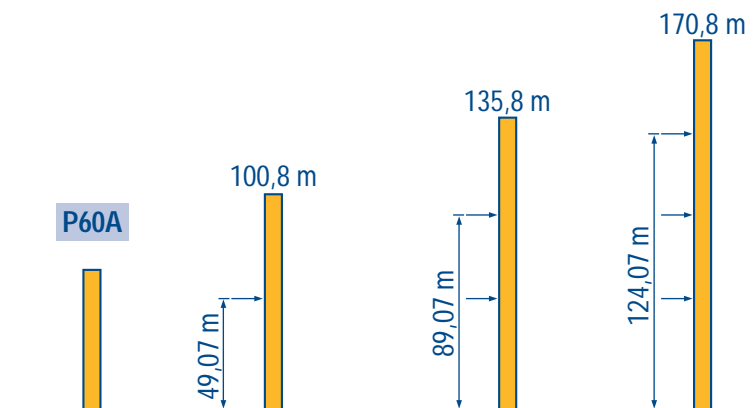
F
D

Anchorage
Anclaje

GB
E

Ancoraggio
附着

I
C



LOB 1

Lest de contre-fleche
Gegenauslegerballast



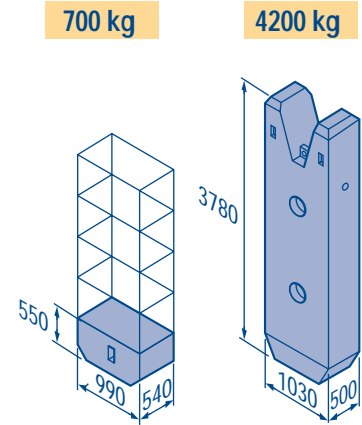
Counter-jib ballast
Lastre de contra flecha



Contrappeso
平衡臂重



Jib length (m)	Jib height (m)	55 RCS-70 RCS-50 LVF-75 LVF			120 LCC		
		4200 kg	700 kg	⚙️ (kg)	4200 kg	700 kg	⚙️ (kg)
75 m	24,2 m	5	1	21 700	4	5	20 300
70 m	24,2 m	4	3	18 900	4	1	17 500
65 m	24,2 m	4	1	17 500	3	5	16 100
60 m	24,2 m	3	3	14 700	3	1	13 300
55 m	24,2 m	3	1	13 300	2	5	11 900
50 m (B60A)	24,2 m	3	-	12 600	2	4	11 200
50 m	18,2 m	5	1	21 700	4	5	20 300
45 m	18,2 m	4	3	18 900	4	1	17 500
40 m	18,2 m	4	-	16 800	3	4	15 400



LOB 1

Lest de base
Grundballast



Base ballast
Lastre de base



Zavorra di base
压重



Jib length (m)	V 60 A	H (m)	⚙️ (t)												
			69,2	65,9	60,9	55,9	50,9	45,9	40,9	35,9	30,9	25,9	20,9	15,9	
2			108	108	108	108	108	108	108	96	96	96	96	84	84

LOB 1

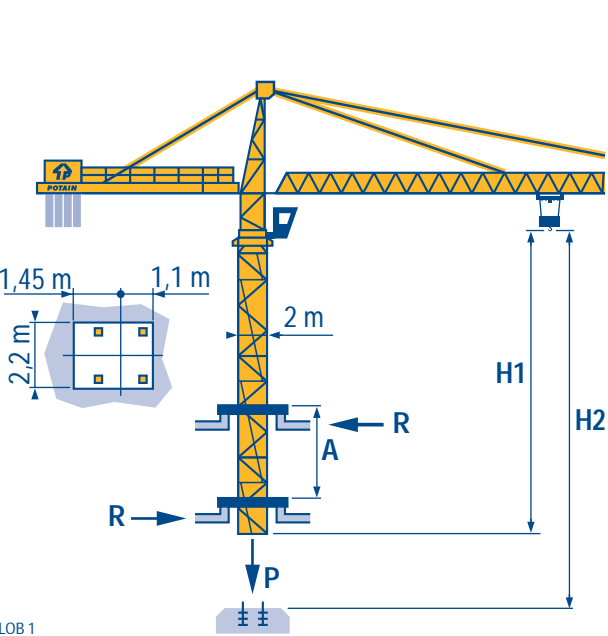
Télescopage sur dalles
Kletterkrane im Gebäude



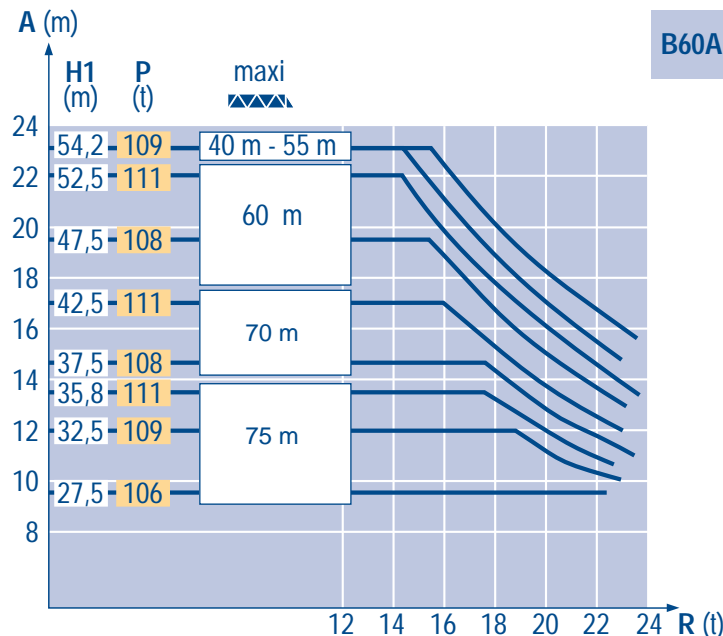
Climbing crane
Telescopage gruas trepadoras



Gru in cavedio
楼板上顶升





















LOB 1





















Parameter	French (F)	English (GB)	Italian (I)
A	Distance entre cadres	Distance between collars	Distanza fra i telai
H1	Hauteur grue	Crane height	Altezza gru
P	Poids de la grue (en service)	Crane weight (in service)	Peso della gru (in servizio)
R	Réaction horizontale	Horizontal reaction	Reazione orizzontale

Parameter	German (D)	Spanish (E)	Chinese (C)
A	Abstand zwischen den Rahmen	各附着框之间距离	
H1	Kranhöhe	工作状态下塔机高度	
P	Krangewicht (in Betrieb)	工作状态下塔机重量	
R	Horizontalkräfte	水平反力	

										ch - PS hp	kW				
	55 RCS 40	m/min	0 → 25		0 → 50		0 → 12,5		0 → 25		55	40,5	467 m > 467 		
		t	8		4		16		8						
	70 RCS 40	m/min	0 → 31		0 → 62		0 → 15,5		0 → 31		70	51	578 m > 578 		
		t	8		4		16		8						
	6 D3 V6	m/min	8 - 42 (16 t) 84 (8 t)									7,4	5,4		
	50 LVF 40	m/min	2,5 → 7 → 21 → 28 → 42 → 50					1,25 → 3,5 → 10,5 → 14 → 21 → 25					50	37	366 m > 366 
		t	8	8	8	6	4	2	16	16	16	12			
	75 LVF 40	m/min	3,5 → 10 → 29 → 39 → 58 → 70					1,75 → 5 → 14,5 → 19,5 → 29 → 35					75	55	507 m > 507 
		t	8	8	8	6	4	2	16	16	16	12			
120 LCC 40	m/min	0 → 67,5 → 81 → 101 → 135 → 162					0 → 34 → 40,5 → 50,5 → 67,5 → 81					120	88	588 m > 588 	
	t	8	6	4	2	1	16	12	8	4	2				
	6 DVF 6	m/min	0 - 4 → 42 (16 t) 0 - 4 → 84 (8 t) 0 - 4 → 100 (4 t)									5,5	4		
	RVF OPTIMA	tr/min U/min rpm	0 → 0,7									2 x 12	2 x 9		
V 60 A 	RT 544 A1 2V	m/min	13,5 - 2,7									4 x 7	4 x 5,2		
 R ≥ 13 m	TCV 649 ARC	m/min	10 - 50									4 x 6,8	4 x 5		
CEI 38 		IEC 38		kVA											
400 V (+6% -10%) 50 Hz		55 RCS/LVF : 90 kVA 70 RCS/75 LVF : 110 kVA 120 LCC : 160 kVA					84/534 - 87/405								

LOB 1

	Levage		Hoisting		Sollevamento	
	Distribution		Trolleying		Distribuzione	
	Orientation		Slewing		Rotazione	
	Translation		Travelling		Traslazione	
	Conforme aux directives CEE 84/534 et 87/405 sur le niveau acoustique		In compliance with the EEC 84/534 and 87/405 Instructions on noise level		Conforme alle direttive CEE 84/534 e 87/405 sul livello acustico	
	Nous consulter		Consult us		Consultateci	
	Heben		Elevación		起升	
	Katzfahren		Distribución		变幅	
	Schwenken		Orientación		回转	
	Kranfahren		Traslación		行走	
	Gemäss EWG-Richtlinien 84/534 und 87/405 für den Schall-Leistungspegel		Conforme con las directivas CEE 84/534 y 87/405 sobre el nivel acustico		符合 CEE 84/534 - CEE 87/405 声晌度规定	
	Auf Anfrage		Consultarnos		请向我方咨询	



修改权在我方

Modifiche riservate

Modificaciones reservadas

Subject to modification

Änderungen vorbehalten

Modifications réservées

Printed in France

Réalisation SODIPE

POTAIN [®]
GRUPE LEGRIS INDUSTRIES

18.Rue de Charbonnières, B.P. 173-F
69132 ECULLY Cedex
Tél. (33)04.72.20.20.20
Fax (33)04.72.20.20.00
<http://www.potain.fr>
E-mail : mkt@potain.fr

TOPKIT MD 345 L16

Copyright.Reproduction interdite © POTAIN 1997

Deutschland
POTAIN GmbH Tel : 06.105.704.0
Italia
POTAIN S.p.A. Tel : 039.65.631
China
Zhangjiagang POTAIN Tel : 520. 877.1451

Réf. 1997.51 LOB 1